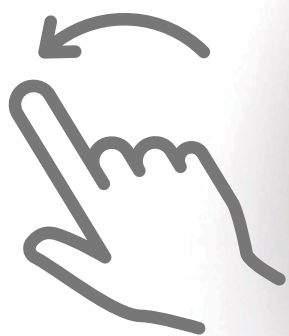


DAD!

Your voice matters in your baby's development!

Participate in a **paid** research study **from your own home!**



Swipe to learn more.

Receive up to
\$260
from your home!



W
UNIVERSITY of
WASHINGTON

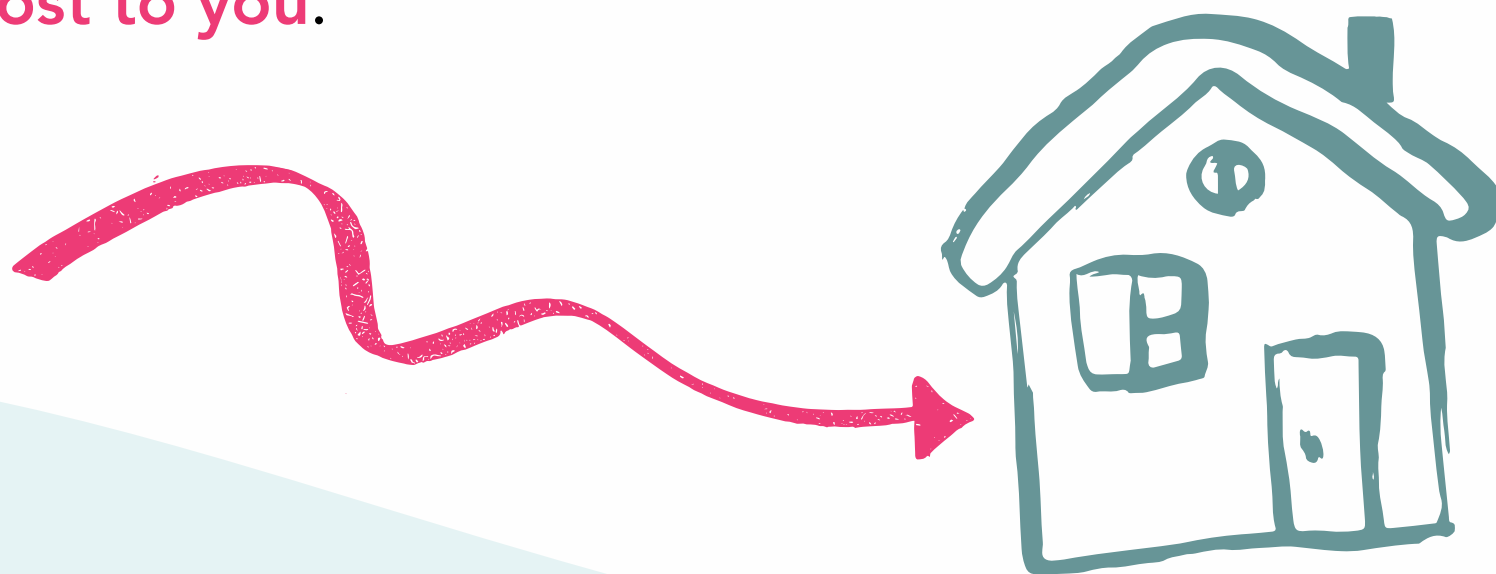
FIU
Center for
Children and Families

What is this study?

This is longitudinal study organized by a team of researchers with the University of Washington and Florida International University.

We are interested in learning about **the role of fathers in the bilingual language development of Latino/Hispanic babies.**

This study can be **completed from home** and all materials will be sent **at no cost to you.**



W
UNIVERSITY of
WASHINGTON

FIU
Center for
Children and Families

Who can participate?

We are currently looking for participants who are:

- The father of a baby (**of up to 7 months**) or expecting
- Residing **anywhere in the U.S.**
- **Latino/Hispanic**
- A **Spanish speaker**



What will I be asked to do?

Participation will occur across 12-16 months, during which you will access either a language coaching app or an online infant nutrition course. At 4-5 timepoints in that period you will be asked to:

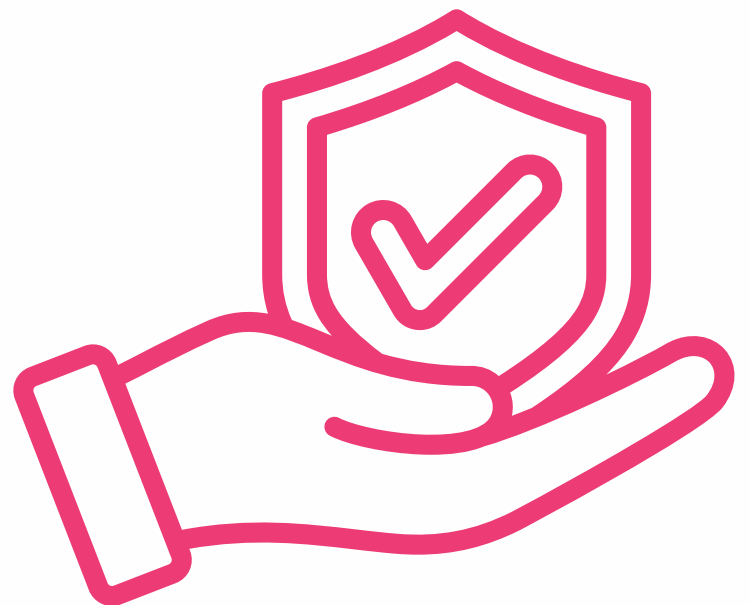
- Complete online **questionnaires.**
- Complete a daylong **audio recording.**



Will my information be protected?

Your privacy is very important to us. All data we collect from this study will be **coded and kept separate** from any personally identifiable information we use to contact you.

The audio recordings are used only to study **your baby's language environment** and not for other purposes such as any artificial intelligence training.



How will I be compensated?

You will receive a total of **\$230** or **\$260** for full study participation through **Zelle®**.

If you do not have **Zelle®**, you will need to register, or you can provide the details of a family member. A researcher may assist you in creating a **Zelle®** account.



W
UNIVERSITY of
WASHINGTON

FIU
Center for
Children and Families

Interested? Contact us!

Phone: (206) 843-5935

E-mail: ldplab@uw.edu



W
UNIVERSITY of
WASHINGTON

FIU
Center for
Children and Families