

Treatment Integrity and Fidelity

FIU Center for Children, Youth, & Families

Importance of Measuring

- Ensures children are receiving the treatment as designed
- Provides framework for supervision and systematic staff feedback
- Required for reporting purposes

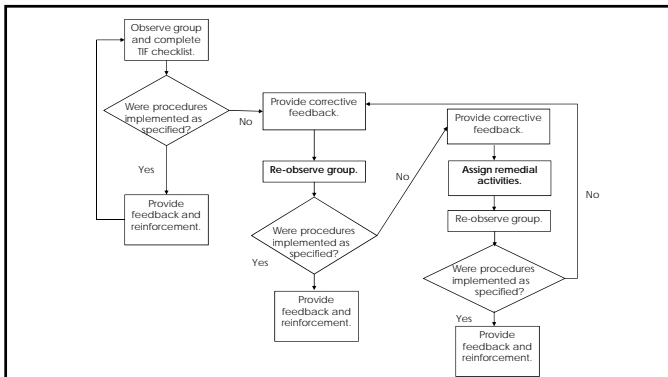
Concepts of Integrity and Fidelity

- Quantitative
- Qualitative

Supervisors conduct daily observations,
sampled across staff members and
activities

Types of Integrity forms Evaluated

- Social Skills Training
- Recreational Activities
- Skill Drills
- Transitions and Bathroom Breaks
- Learning Centers
- Time Out
- Commands
- Honor Roll



Examples of TIF Content-Preactivity Discussion Procedures

Preactivity Discussion

- 1 Defined the Activity Area.
- 2 Reviewed all rules for Group Discussions.
 - Speak at an appropriate voice level.
 - Initiate appropriate eye contact when speaking and when being spoken to directly.
 - Use materials and possessions appropriately.
 - Be responsible for your belongings.
- 3 Reviewed the day's Social Skill in relation to the upcoming game.
- 4 Discussed ways in which Sports Skills practiced previously can be integrated into game play.

Discussion Leader: _____

- 5 Reviewed all Recreational Activity Rules.
 - Follow the rules of the sport.
 - Participate in the game.
 - Stay in your assigned position.
 - Be responsible for your belongings.
 - Use materials and possessions appropriately.
- 6 Reviewed at least two complete subsections of Football Rules.

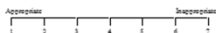
Score: ____ / 6 = ____ %

Discussion Style Example

Preactivity Discussion Style

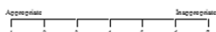
Consideration of Attention Span

Discussion length suitable
 Counselor makes points succinctly
 Pacing and amount of elaboration appropriate
 At least 80% of children appear to be attending



Consideration of Age/Developmental Level of Group

Counselor uses age-appropriate vocabulary
 Children make few clarification requests
 Children's responses indicate understanding
 Children do not appear to be confused



Facial Expression

Varied, reflective of contributions
 Matter-of-fact, impassive in reaction to inappropriate remarks
 Agreeable in response to constructive contributions



Tone of Voice Ratings



Additional Integrity Checks

- Point system reliability observations
- Data recording and entry integrity checks
- Daily Report Card target integrity evaluations
- Individualized Program integrity and reliability evaluations
- Weekly Treatment Reliability Quizzes
