

2019

MIAMI INTERNATIONAL CHILD & ADOLESCENT MENTAL HEALTH CONFERENCE



FIU

Center for
Children and Families

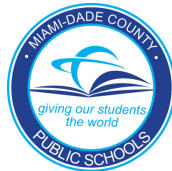
PRESENTED BY:

FIU | Center for
Children and Families
FLORIDA INTERNATIONAL UNIVERSITY

SPONSORED BY:



SOCIETY OF CLINICAL
CHILD & ADOLESCENT
PSYCHOLOGY



MESSAGE FROM THE CHAIR

WELCOME to the 2019 MICAMH CONFERENCE!

Thank you for joining us this year for our 2019 Miami International Child & Adolescent Mental Health Conference! The annual MICAMH Conference is one of the world's leading interdisciplinary conferences presenting state-of-the-art, evidence-based prevention methods and treatments for mental health and educational problems in children and adolescents. You will hear about the latest research findings on child and adolescent mental health and receive hands-on training from the top child mental health experts in the world. This year, we are addressing important youth mental health topics impacting our community including bullying, school shootings, suicide, resilience and more.

Over the years, we have trained thousands of mental health professionals, educators and students to continue our mission of disseminating knowledge of effective treatments and prevention so that we can give children and their families the best chance of living a healthy and happy life.

We thank you for coming together to truly make a difference for the children and families in our communities that we serve.

Best wishes for a memorable and enriching conference!

Sincerely,



Jonathan S. Comer, Ph.D.

MICAMH Conference Chair

GET SOCIAL WITH US!



Use **#MICAMH19** and let others know what you're up to!



@FIUCCF



@FIUCCF



FIU Center for Children
and Families



@FIUCCF



CONTINUING EDUCATION

MAX OF 18 CREDITS TO EARN

Must attend all 3 days*

PSYCHOLOGISTS

The CCF has been approved by the American Psychological Association to offer continuing education for psychologists. The CCF maintains responsibility for the program.

MENTAL HEALTH COUNSELORS

The FIU Counselor Education Program is an NBCC-Approved Continuing Education Provider (ACEP™) and a co-sponsor of the Center for Children and Families' presentations. The FIU Counselor Education program may award NBCC-approved clock hours for events that meet NBCC requirements. The ACEP™ solely is responsible for all aspects of the program. Provider #4565, effective 9/1/11.

NURSES

The American Nurses Credentialing Center (ANCC) accepts continuing education credit provided by APA providers towards ANCC re-certification.

SCHOOL PSYCHOLOGISTS

The Center for Children and Families is approved by the National Association of School Psychologists to offer professional development for school psychologists. The Center for Children and Families maintains responsibility for the program.

SOCIAL WORKERS

This program is approved by the National Association of Social Workers. (Approval #886608594)

FLORIDA PROVIDERS

The conference has also been approved by the Florida Board of Clinical Social Work, Marriage and Family Therapy and Mental Health Counseling; Florida Board of Psychology and Florida Office of School Psychology. Provider #BAP 50-12872.

*A total of 18 continuing education credit/contact hours can be earned! Continuing education can be earned by those in the following professions: psychologists, licensed mental health counselors, licensed clinical social workers, licensed marriage and family therapists, and school psychologists.



Center for
Children and Families

FLORIDA INTERNATIONAL UNIVERSITY

ABOUT THE CCF

The Center for Children and Families (CCF) is an **FIU Preeminent Program** and a **world-class clinical research center** dedicated to improving the lives of children and families struggling with mental health issues.

A circular icon with a dark blue background and white double-line border, containing the text 'EDUCATION & TRAINING' in orange.

EDUCATION
& TRAINING

A circular icon with a dark blue background and white double-line border, containing the text 'CLINICAL SERVICES' in orange.

CLINICAL
SERVICES

A circular icon with a dark blue background and white double-line border, containing the text 'RESEARCH' in orange.

RESEARCH

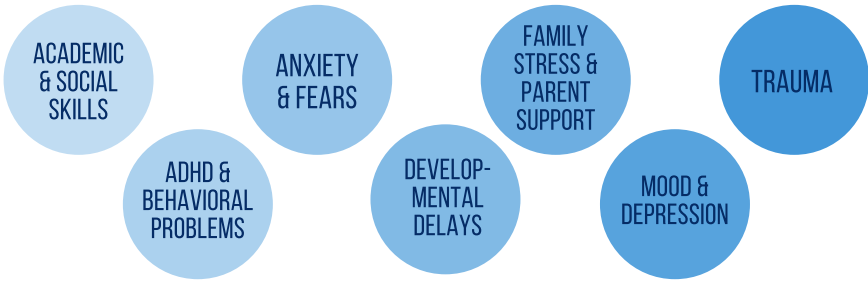
OUR MISSION

Our mission is to improve the lives of children and families struggling with mental health concerns.



CLINICAL SERVICES & RESEARCH

The CCF provides state-of-the-art services to approximately 3,000 families each year through clinical services and research programs presenting with the following concerns:

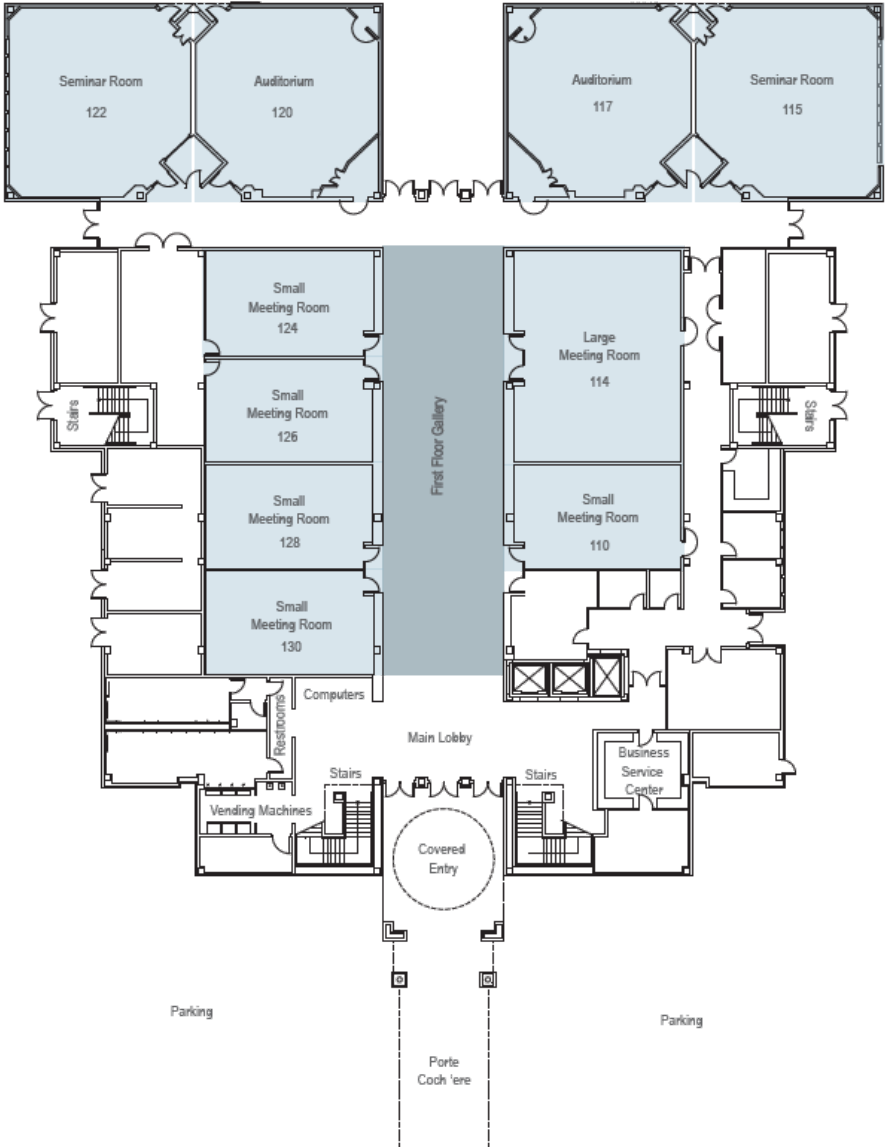


EDUCATION & TRAINING

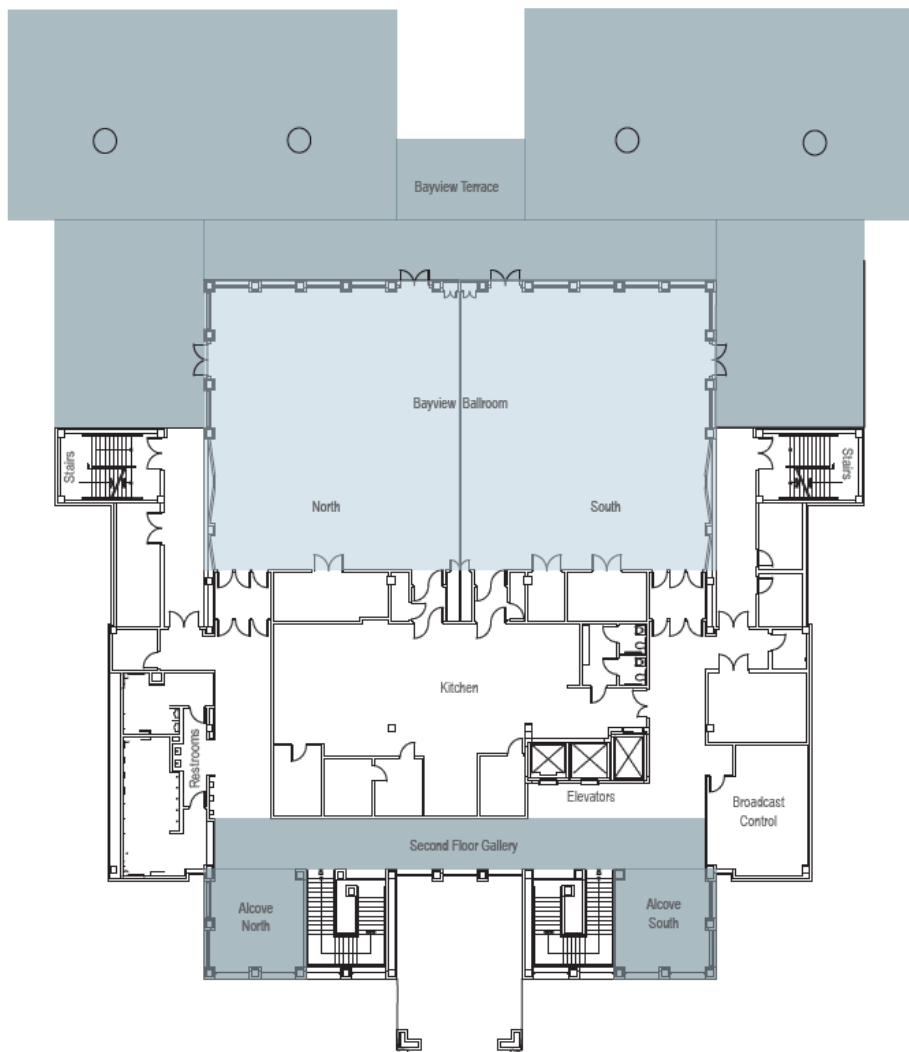
The CCF is committed to providing extensive education and training opportunities for the next generation of mental health professionals from all over the country. The CCF also provides continuing education opportunities in evidence-based approaches for psychologists, mental health professionals and educators.

Through CCF's partnership with Miami-Dade County Public Schools (M-DCPS) and The Children's Trust, the center has also provided professional development training to more than 6,000 teachers and more than 500 schools that has improved classroom experiences for educators and students.

KOVENS FIRST FLOOR MAP



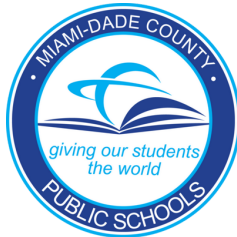
KOVENS SECOND FLOOR MAP



**A SPECIAL THANK YOU
TO OUR SPONSORS!**



**SOCIETY OF CLINICAL
CHILD & ADOLESCENT
PSYCHOLOGY**



A photograph of a conference room with a speaker at a podium and an audience seated at tables. The image is overlaid with a dark blue gradient and various decorative elements like stars and a person icon.

CONFERENCE SCHEDULE

FEBRUARY 20-22, 2019



WEDNESDAY, FEB. 20

8 A.M. **Registration + breakfast**

8:30 A.M. **Conference welcome**

KEYNOTE PRESENTATIONS (Bayview Ballroom)

9 A.M. **Evidence-Based Engagement Interventions for Disruptive Behavior: Looking Through a Microscope and Telescope**



Anil Chacko, Ph.D., Associate Professor,
Department of Applied Psychology, New York University

10 A.M. **Coffee Break**



10:15 A.M. **Structural Stigma and LGBT Mental Health**



Mark L. Hatzenbuehler, Ph.D., Associate Professor,
Department of Sociomedical Sciences, Columbia University Mailman School of Public Health

11:30 A.M. **Transdiagnostic Treatments for Youth Emotional Disorders: How Can We Get "what works" to More Children and Adolescents?**



Jill Ehrenreich-May, Ph.D., Associate Professor,
Department of Psychology, University of Miami

12:30 P.M. **Lunch**



1:15 P.M. **Poster Session**

2 P.M. **WORKSHOPS** (You may only attend one)

BAYVIEW
BALLROOM



Evidence-Based Engagement Interventions for Disruptive Behavior: Practical Strategies to Integrate Into Routine Care

Anil Chacko, Ph.D., Associate Professor, Department of Applied Psychology, New York University

ROOM 114



An Introduction to the Unified Protocols for Transdiagnostic Treatment of Emotional Disorders in Children and Adolescents

Jill Ehrenreich-May, Ph.D., Associate Professor, Department of Psychology, University of Miami

ROOM 122



Treating Shy, Inhibited, and Socially Anxious Youth in Early Childhood

Jami Furr, Ph.D., Senior Psychologist, Mental Health Interventions and Technology (MINT) Program, Center for Children and Families at Florida International University

ROOM 115



Building Social, Emotional and Behavioral Competencies in the Elementary School Setting Using a Multi-Tiered System of Supports

Erika Coles, Ph.D., Clinical Director, Center for Children and Families at Florida International University

3 P.M.

Coffee Break



5 P.M.

End of Day

THURSDAY, FEB. 21

8 A.M. **Registration + breakfast**

8:30 A.M. **Conference welcome**

KEYNOTE PRESENTATIONS (Bayview Ballroom)

9 A.M. **Deconstructing Serendipity and School-Based Mentoring for Chronically Bullied Children**



Timothy A. Cavell, Ph.D., *Professor, Department of Psychological Science, University of Arkansas*

10 A.M. **Coffee Break**



10:15 A.M. **Predicting Longitudinal Outcomes of Childhood ADHD**



Steve S. Lee, Ph.D., *Professor, Department of Psychology, University of California, Los Angeles*

11:30 A.M. **Adolescent Suicide Prevention**



Cheryl A. King, Ph.D., *Professor, Departments of Psychiatry and Psychology, University of Michigan*

12:30 P.M. **Lunch**



1:15 P.M. **Poster Session**

2 P.M. WORKSHOPS (You may only attend one)

ROOM 122 What Should Mental Health Care Providers Know About Youth Mentoring?



Timothy A. Cavell, Ph.D., Professor, Department of Psychological Science, University of Arkansas

ROOM 114 Mechanisms of ADHD Outcomes: What Are the Optimal Intervention Targets?



Steve S. Lee, Ph.D., Professor, Department of Psychology, University of California, Los Angeles

BAYVIEW
BALLROOM

Adolescents at Risk for Suicide: Recognizing Risk, Evaluating Risk, and Managing Care



Cheryl A. King, Ph.D., Professor, Departments of Psychiatry and Psychology, University of Michigan

ROOM 115 Engaging Caregivers and Youth in Treatment Planning: How to Apply Shared Decision Making to Youth Psychotherapy



David Langer, Ph.D., Assistant Professor, Department of Psychology, Suffolk University

ROOM 126 National Institutes of Mental Health (NIMH) Workshops*



- 1) NIH Submission and Review: What to Expect from the Submission, Review, and Resubmission Process
- 2) Training Opportunities and Funding Mechanisms: Information for Mentors and Trainees
- 3) NIMH Priorities for Clinical Research: Optimizing Your Application's Responsiveness to Current Priorities and Funding Opportunities



Mary Rooney, Ph.D., ABPP, Program Officer, Division of Services and Interventions Research, National Institute of Mental Health (NIMH)
&

Joel Sherrill, Ph.D., Deputy Director, Division of Services and Intervention Research, National Institutes of Health (NIH)

*NIMH Workshops will not offer CEs

3 P.M. Coffee Break



5 P.M. End of day

FRIDAY, FEB. 22

8 A.M. **Registration + breakfast**

8:30 A.M. **Conference welcome**

KEYNOTE PRESENTATIONS (Bayview Ballroom)

9 A.M. **Ordinary Magic: Advances in Developmental Resilience Science**



Ann S. Masten, Ph.D., *Professor, Institute of Child Development at the University of Minnesota Twin Cities*

10 A.M. **Coffee Break**



10:15 A.M. **Mass Violence: Understanding the Complexity of Trauma & Grief in Communities**



Melissa Brymer, Ph.D., *Director, Terrorism and Disaster Programs, UCLA-Duke National Center for Child Traumatic Stress*

11:30 A.M. **Towards a Cultural Psychotherapy: Including Meaningful Clinical Evidence**



Martin J. La Roche, Ph.D., *Director of Mental Health Training, Boston Children's Hospital/Martha Eliot Health Center*

12:30 P.M. **Lunch**



1:15 P.M. **Poster Session**

2 P.M. WORKSHOPS (You may only attend one)

BAYVIEW
BALLROOM

Resilience in Action: Implications of Science for Practice and Policy



Ann S. Masten, Ph.D., *Professor, Institute of Child Development at the University of Minnesota Twin Cities*

ROOM 115

Creating a School Recovery Program



Melissa Brymer, Ph.D., *Director, Terrorism and Disaster Programs, UCLA-Duke National Center for Child Traumatic Stress*

ROOM 114

A Cultural Psychotherapy Workshop: A Clinical Illustration



Martin J. La Roche, Ph.D., *Director of Mental Health Training, Boston Children's Hospital/Martha Eliot Health Center*

3 P.M. **Coffee Break** 

5 P.M. **End of Day**



POSTER PRESENTATIONS

DAY 1

Promising Findings of an Out-of-School Program for Latino and Other Ethnic-Minority Children
Celena DeLapp & Sandra Barrueco

Using an Integrative Treatment Approach For Atypical Pica Presentation: A Case Study
Danielle Cooke & Brian Olsen

Understanding the Perspectives of Youth: A Qualitative Study of a Cognitive-Behavioral Intervention for Anxiety
Hannah L. Jones

Parent and teacher training to gain compliance and decrease frustration: Getting them "over the hump"
Beth Trammell & Madeline Elaine-Truette

Impact of Clinical Diagnosis and Family Values on Acceptability of Behavioral Parent Training Skills
Karina Turner, Debbie Torres, Zachary Speer, Christine A.P. Walther, & Sara R. Elkins

Relationships Between Internalizing/Externalizing OCD Behaviors, Accommodation, and OCD Dimensionality
Seth Downing, Andrew G. Guzick, Ryan McCarty, Danielle L. Cooke, Adam M. Reid, & Joseph P.H. McNamara

The Role of Executive Functioning in Treatment Outcome for Child Anxiety
Sheina A. Godovich, Christopher J. Senior, Kathryn A. Degnan, Colleen Cummings, Mary K. Alvord, & Brendan A. Rich

Integrating Anxiety Sensitivity, Distress Intolerance, and Youth Anxiety Symptomatology: A Structural Equation Model
Adam H. Beermann, Alicia Fenley, Ming Him Tai, Donna B. Pincus, & David A. Langer

Identifying interventions for aggressive behavior that are feasible within schools
Noora Abdulkerim, Amy Briesch, & Sophie Hall

Past Peer Victimization Experiences and Psychological Well-Being among South Asian Immigrant Students
Rejitha Nair

DAY 2

Conceptualizing Childhood Obesity and Associated Factors in a Nationally Representative Sample
Michelle M. Liriano, Brianna Chin, Yesilieth Diaz, Allie English, Katelyn Garcia, & Anne S. Morrow

Focal Interview of Sleep (FIOS) for Children: Psychometric Evaluation of a Semi-Structured Interview for Sleep-Related Problems in Clinic-Referred Youth
Guadalupe C. Patriarca, Emily Ricketts, Melissa M. Milbert, Laura J. Trubnick, Jennifer C. Cousins, Eleni Tsalikis, Alison G. Harvey, Erika E. Forbes, Neal D. Ryan, Robert E. Dahl, & Dana L. McMakin

Emotion Regulation and the Unified Protocol for Children and Adolescents: Preliminary Findings
Kelly Kudryk, Niza A. Tonarely, & Jill Ehrenreich-May

Assessing Cultural Formulation Interview fidelity among community clinicians
Emily Cruz, Enid Moreira, Amanda Sanchez, & Jonathan S. Comer

Cultural Formulation Interview fidelity predicting satisfaction with intake
Enid Moreira, Emily Cruz, Amanda Sanchez, & Jonathan S. Comer

DAY 3

Managing Frustration for Children with ADHD: Data from the open trial and next steps

Paul J. Rosen, Kirsten D. Leaberry, Kelly Slaughter, Joseph Reese, Richard E.A. Loren, & Jeffery N. Epstein

Effects of a Peer-Led Bullying and Teen Dating Violence Prevention Program with High-School Students

Nicole Caraballo, Crystal Cederna-Meko, Ronald E. Cobb, Ronald G. Slaby, & Allyson Cherkasky

The relationship between parental technological literacy and perceived acceptability of online mental health resources among treatment-seeking families: Examining the moderating influence of child clinical severity

Hanan Salem, Christopher Georgiadis, Jami M. Furr, Daniel M. Bagner, & Jonathan S. Comer

Understanding barriers to youth help-seeking behavior in response to disclosure of suicidal ideation by a suicidal peer

Leah Lurye, Samara Shanker, Alena Lee, Steven Sust, & Kate Hardy

Identifying demographics of youth least likely to disclose knowledge of peer suicidal ideation to a trusted adult

Samara Shanker, Leah Lurye, Alena Lee, Steven Sust, & Kate Hardy

The Longitudinal Association Between Youth Screen Time and Attention Problems: The Role of Sleep Disturbances

Emoni McGregor, Chelsea F. Dale, Juliana Acosta, & Justin Parent

Using Wikipedia, Wikiversity, and Weebly to Disseminate Evidence-Based Psychology: An Update on Progress

Elizabeth D. Wilson, Hannah Kim, The HGAPS Author Team, & Eric A. Youngstrom

Criterion Validity and Factor Analysis of a Rationally-Derived Psychoneuroimmunological Scale

Elizabeth D. Wilson & Eric A. Youngstrom

Emotional and Behavioral Correlates of Manic and Depressive Symptoms in College Students

Elizabeth D. Wilson, Joshua A. Langfus, & Eric A. Youngstrom

Evaluating the relationship between facets of Asian cultural identity and disordered eating behaviors among college students

Hannah Kim, Paulina Ruiz, & Eric A. Youngstrom

Relationship Between East Asian Emerging Adults' Ideas About Parenting and Experienced Parenting Practices

Emma G. Choplin, Sydney R. Howie, Paulina A. Ruiz, & Eric A. Youngstrom

Socio-contextual Factors related to Adolescents Exposed to Violent Behaviors in the Family

Derby Munoz-Rojas, Warner Cavero, & Mary Solano-Rivera

Black Mothers' Perceptions of Intergenerational Mother-Daughter Communications about TDV Victimization

Jeffrey J. Pierre, Claire Helpingstine, & Dionne Stephens

Exploring pathways to adolescent substance use: A longitudinal examination of sport participation

Julie V. Cristello, Elisa M. Trucco, & Robert A. Zucker

Parental depression and child anxiety among Hispanic and/or Latinx youth: The moderating role of acculturation factors

Natalie Frech, Karina Silva, Amanda Sanchez, & Jonathan S. Comer

Psychometric properties of the Affective Reactivity Index for Irritability in Early Childhood

Maria Wilson, Danielle Cornacchio, & Jonathan S. Comer



**Center for
Children and Families**

FLORIDA INTERNATIONAL UNIVERSITY

11200 SW 8th Street, AHC-1, Room 140
Miami, Florida

305-348-0477 | ccf@fiu.edu | ccf.fiu.edu

