



MIAMI INTERNATIONAL
CHILD & ADOLESCENT
MENTAL HEALTH CONFERENCE
FEBRUARY 21-23, 2018



SOCIETY OF CLINICAL
CHILD & ADOLESCENT
PSYCHOLOGY



FIU Center for
Children and Families
FLORIDA INTERNATIONAL UNIVERSITY

Co-sponsored By:

FIU | Center for
Children and Families
FLORIDA INTERNATIONAL UNIVERSITY



SOCIETY OF CLINICAL
CHILD & ADOLESCENT
PSYCHOLOGY





WELCOME

to the

2018

Miami International
Child & Adolescent
Mental Health
Conference

FEBRUARY 21-23

A Message from the Chair

Welcome to the 2018 Miami International Child & Adolescent Mental Health (MICAMH) Conference! We are honored to have nearly 500 attendees travel from all over the world to join us for this special, three-day event. The MICAMH Conference, now hosted annually, is one of the world's leading interdisciplinary conferences presenting state-of-the-art, evidence-based prevention methods and treatments for mental health and educational problems in children and adolescents.

You will hear about the latest research findings on child and adolescent mental health and receive hands-on training from the top child mental health experts in the world. Over the years, we have trained thousands of mental health professionals, educators and students to continue our mission of disseminating knowledge of effective treatments and prevention so that we can give children and their families the best chance of living a healthy and happy life.

We are beyond thankful to have you all come together to truly make a difference for the children and families in our communities that desperately need us.

Best wishes for a memorable and enriching conference!

Sincerely,

A handwritten signature in black ink, appearing to read 'Jonathan S. Comer'.

Jonathan S. Comer, Ph.D.
MICAMH Conference Chair

GET
SOCIAL
WITH
US!



@FIUCCF



@FIUCCF



FIU Center for
Children and Families



FIU CCF

USE HASHTAGS!



#MICAMH18

- Tweet conference updates
- Let others know what you're learning
- Let others know who you're meeting

FIU | Center for
Children and Families
FLORIDA INTERNATIONAL UNIVERSITY



CONTINUING EDUCATION

MAX OF 18 CREDITS CAN BE EARNED

Must attend all 3 conference days

A total of **18** continuing education credit/contact hours can be earned! Continuing education can be earned by those in the following professions: psychologists, licensed mental health counselors, licensed clinical social workers, licensed marriage and family therapists, and school psychologists

The Breakdown

Psychologists

The CCF has been approved by the American Psychological Association to offer continuing education for psychologists. The CCF maintains responsibility for the program.

Mental Health Counselors

The FIU Counselor Education Program is an NBCC-Approved Continuing Education Provider (ACEP™) and a co-sponsor of the Center for Children and Families' presentations. The FIU Counselor Education program may award NBCC-approved clock hours for events that meet NBCC requirements. The ACEP™ solely is responsible for all aspects of the program. Provider #4565, effective 9/1/11.

Nurses

The American Nurses Credentialing Center (ANCC) accepts continuing education credit provided by APA providers towards ANCC re-certification.

School Psychologists

The Center for Children and Families is approved by the National Association of School Psychologists to offer professional development for school psychologists. The Center for Children and Families maintains responsibility for the program.

Social Workers

This program is approved by the National Association of Social Workers. (Approval #886608594)

Florida Providers

The conference has also been approved by the Florida Board of Clinical Social Work, Marriage and Family Therapy and Mental Health Counseling; Florida Board of Psychology and Florida Office of School Psychology. Provider #BAP 50-12872.



Center for
Children and Families

FLORIDA INTERNATIONAL UNIVERSITY

**CLINICAL
SERVICES**

**EDUCATION &
TRAINING**

RESEARCH



ABOUT THE CCF

The Center for Children and Families at Florida International University is comprised of a nationally recognized team of researchers and service providers committed to improving the lives of children and families struggling with mental health problems.

OUR MISSION

Our mission is to improve the lives of children and families struggling with mental health concerns.

CLINICAL SERVICES AND RESEARCH

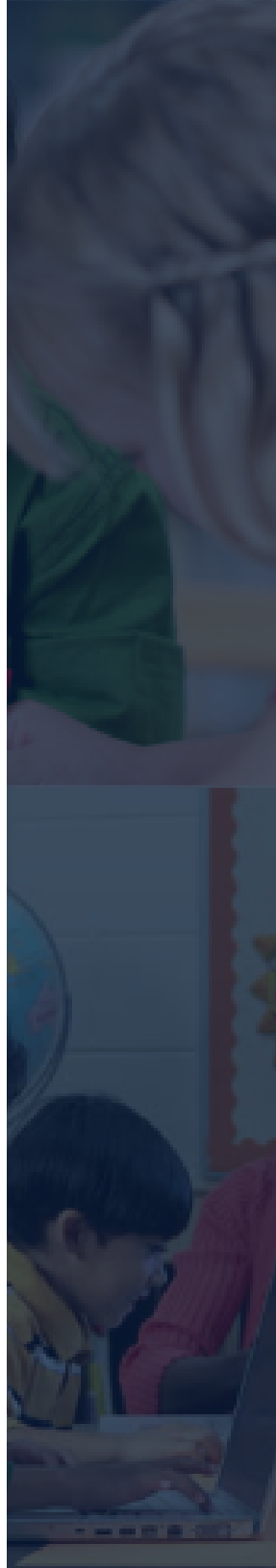
The CCF provides state-of-the-art services to approximately **3,500 families** each year through clinical services and research programs presenting with the following concerns:

- Academic and Social Skills
- ADHD & Behavioral Problems
- Anxiety & Fears
- Family Stress & Parenting Support
- Mood & Depression
- Trauma

EDUCATION & TRAINING

The CCF is committed to providing extensive education and training opportunities for the next generation of mental health professionals from all over the country.

The CCF also provides continuing education opportunities in evidence-based approaches for psychologists, mental health professionals and educators. Through CCF's partnership with Miami-Dade County Public Schools (M-DCPS) and The Children's Trust, the center has also provided professional development training to more than **6,000 M-DCPS teachers** and nearly **500 schools** that has improved classroom experiences for educators and students.





FEATURED KEYNOTE SPEAKERS



Thomas H. Ollendick, Ph.D.
Virginia Tech



Connie L. Kasari, Ph.D.
UCLA



Enrique W. Neblett, Jr., Ph.D.
UNC at Chapel Hill



Carolyn Black Becker, Ph.D.
Trinity University



Donna B. Pincus, Ph.D.
Boston University



Andres De Los Reyes, Ph.D.
University of Maryland at College Park



Thomas J. Power, Ph.D., ABPP
Children's Hospital of Philadelphia



Steven W. Evans, Ph.D.
Ohio University



George J. DuPaul, Ph.D.
Lehigh University



Charlotte Johnston, Ph.D.
University of British Columbia

WORKSHOP PRESENTERS

DAY 1



Carolyn Black Becker, Ph.D.
Trinity University



Tara S. Peris, Ph.D.
UCLA, Semel Institute



Thomas H. Ollendick, Ph.D.
Virginia Tech



Connie L. Kasari, Ph.D.
UCLA



Nicole M. Fava, Ph.D.
FIU

DAY 2



Donna B. Pincus, Ph.D.
Boston University



Charlotte Johnston, Ph.D.
University of British Columbia



Erlanger A. Turner, Ph.D.
University of Houston-Downtown



Mary Fristad, Ph.D., ABPP
Ohio State University



Andres De Los Reyes, Ph.D.
University of Maryland
at College Park

DAY 3



Steven W. Evans, Ph.D.
Ohio University



George J. DuPaul, Ph.D.
Lehigh University



Erika K. Coles, Ph.D.
FIU

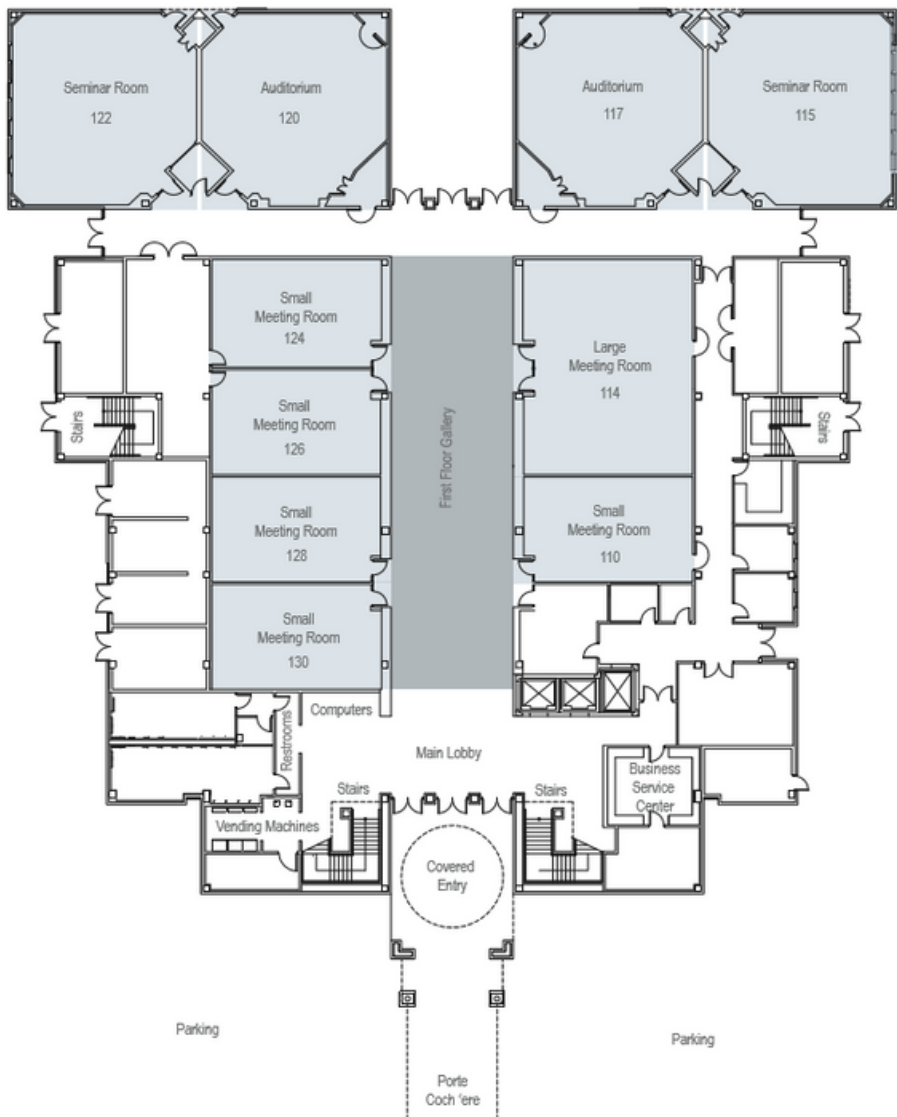


Thomas J. Power, Ph.D., ABPP
Children's Hospital of
Philadelphia

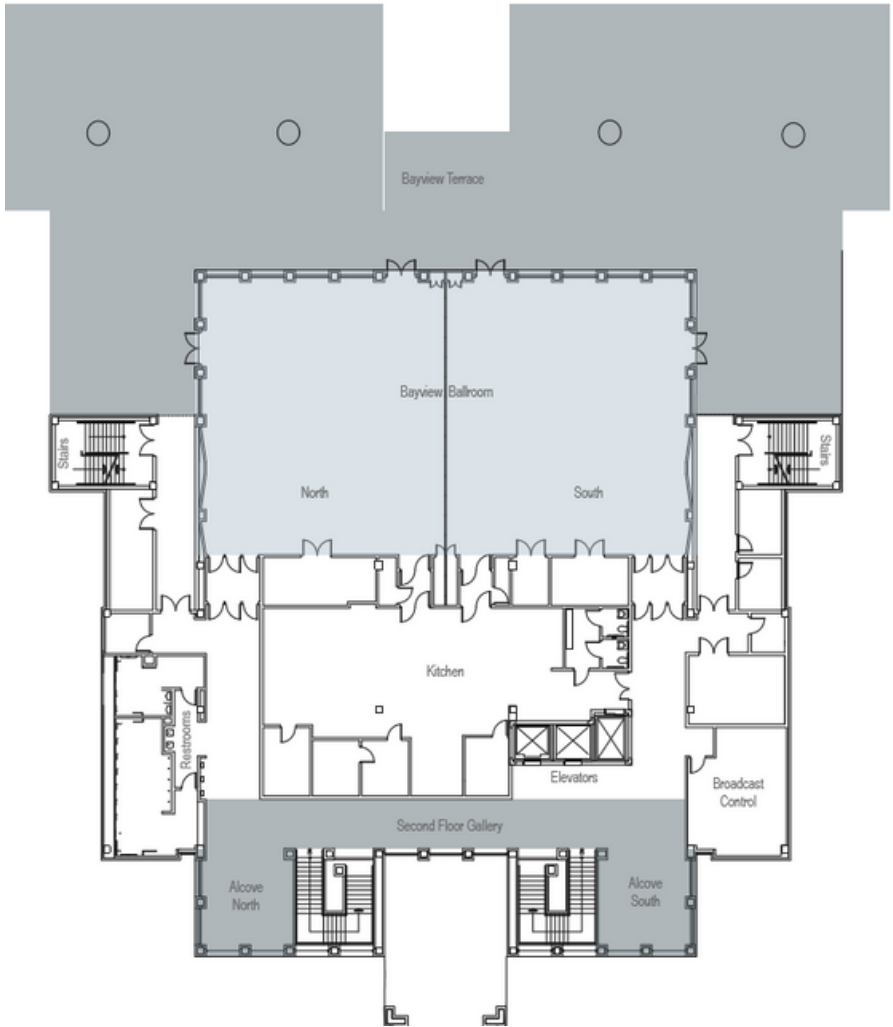


Sannisha K. Dale, Ph.D.
University of Miami

KOVEN'S FIRST FLOOR MAP



KOVEN'S SECOND FLOOR MAP



A special
THANK YOU
to our partners



**SOCIETY OF CLINICAL
CHILD & ADOLESCENT
PSYCHOLOGY**



MICAMH PROGRAM

FEBRUARY 21-23, 2018





DAY 1

FEBRUARY 21, 2018

8 A.M.

Registration + continental breakfast

KEYNOTE PRESENTATIONS (BAYVIEW BALLROOM)

8:30 A.M.

MICAMH Conference welcome and introduction

8:45 A.M.

Brief, Intensive Treatments for Childhood Anxiety and Phobic Disorders: The future that is now



Thomas H. Ollendick, Ph.D.
Distinguished Professor, Department of Psychology, Virginia Tech

9:45 A.M.

Coffee Break

10 A.M.

State of the Science on Early Interventions for Children with ASD



Connie L. Kasari, Ph.D.
Professor, Human Development and Psychiatry, University of California, Los Angeles

11:05 A.M.

Racism and African American Youth Mental Health



Enrique W. Neblett, Jr., Ph.D.
Associate Professor, Department of Psychology and Neuroscience, University of North Carolina at Chapel Hill

12:05 P.M.

Lunch

1:30 P.M.

Body Dissatisfaction: Why should we care and what can we do about it?



Carolyn Black Becker, Ph.D.
Professor, Department of Psychology, Trinity University

2:30 P.M.

Coffee Break

3 - 5 P.M.

WORKSHOPS



ROOM 115



Promoting Body Acceptance in a World that Fosters Body Hatred: Lessons from the Body Project

Carolyn Black Becker, Ph.D.
Professor, Department of Psychology, Trinity University

ROOM 114



Obsessive Compulsive Disorder in Children and Adolescents

Tara S. Peris, Ph.D.
Associate Professor of Psychiatry and Biobehavioral Sciences, UCLA Semel Institute

ROOM 117



One Session Treatment of Specific Phobias: Prevention and Intervention

Thomas H. Ollendick, Ph.D.
Distinguished Professor, Department of Psychology, Virginia Tech

ROOM 122



Social Communication Intervention for Children with ASD

Connie L. Kasari, Ph.D.
Professor, Human Development and Psychiatry, University of California, Los Angeles

ROOM 120



Resilient Sexualities: Sexual Health and Well-Being Despite Childhood Trauma and Adversity

Nicole M. Fava, Ph.D.
Assistant Professor, School of Social Work, Florida International University

5 P.M.

Poster presentations (first-floor hallway)

6 P.M.

End of day



DAY 2

FEBRUARY 22, 2018

8 A.M.

Registration + continental breakfast

KEYNOTE PRESENTATIONS (BAYVIEW BALLROOM)

8:30 A.M.

MICAMH Conference welcome and introduction

8:45 A.M.



Recent Advances in the Development of Psychological Treatments for Adolescents with Panic Disorder

Donna B. Pincus, Ph.D.

Associate Professor, Department of Psychological and Brain Sciences, Boston University

9:45 A.M.

Coffee Break

10 A.M.



Special Issues in Clinical Child and Adolescent Assessment

Andres De Los Reyes, Ph.D.

Associate Professor, Department of Psychology, University of Maryland at College Park

11:05 A.M.



Integrating Behavioral Health Services into Primary Care

Thomas J. Power, Ph.D., ABPP

Chief Psychologist, Department of Child and Adolescent Psychiatry and Behavioral Sciences, Children's Hospital of Philadelphia

12:05 P.M.

Lunch



1:45 - 5 P.M.

(coffee break
at 3:30 p.m.)

WORKSHOPS

ROOM 122



Helping Children Grow Up Brave: Evidence-Based Strategies for Helping Youth Overcome Fear, Stress, and Anxiety

Donna B. Pincus, Ph.D.

Associate Professor, Department of Psychological and Brain Sciences, Boston University

ROOM 117



Parental Cognitions: Assessment and Treatment Implications

Charlotte Johnston, Ph.D.

Professor, Department of Psychology, University of British Columbia

ROOM 115



Bridging the Gap: Understanding and Addressing Barriers to Treatment for Ethnic Minority Families

Erlanger A. Turner, Ph.D.

Assistant Professor of Psychology, Department of Social Sciences, University of Houston-Downtown

ROOM 114



Evidence-Based Treatment for Youth with Mood and Comorbid Disorders

Mary Fristad, Ph.D., ABPP

Professor, Department of Psychiatry and Behavioral Health, The Ohio State University Wexner Medical Center

ROOM 120



Multi-Modal Assessment of Adolescent Social Anxiety

Andres De Los Reyes, Ph.D.

Associate Professor, Department of Psychology, University of Maryland at College Park

5 P.M.

Poster presentations (first-floor hallway)

6 P.M.

End of day



DAY 3

FEBRUARY 23, 2018

8 A.M.

Registration + continental breakfast

KEYNOTE PRESENTATIONS (BAYVIEW BALLROOM)

8:30 A.M

MICAMH Conference welcome and introduction

8:45 A.M.



School Mental Health Services Are Central to Best Practices for Youth with Emotional and Behavioral Problems

Steven W. Evans, Ph.D.

Professor, Department of Psychology, Ohio University

9:45 A.M.

Coffee Break

10 A.M.



Response to Intervention (RTI) Process and Strategies for Elementary School

George J. DuPaul, Ph.D.

Professor of School Psychology, Department of Education and Human Services, Lehigh University

11:05 A.M.



Families and ADHD

Charlotte Johnston, Ph.D.

Professor, Department of Psychology, University of British Columbia

12:05 P.M.

Lunch



1:45 - 5 P.M.
(coffee break
at 3:30 p.m.)

WORKSHOPS

ROOM 120



School Mental Health Services for Adolescents with ADHD

Steven W. Evans, Ph.D.

Professor, Department of Psychology, Ohio University

ROOM 114



Classroom Management Strategies for Students with ADHD and Disruptive Behavior

George J. DuPaul, Ph.D.

Professor of School Psychology, Department of Education and Human Services, Lehigh University

ROOM 117



Building Social and Behavioral Competencies in the Elementary School Setting

Erika K. Coles, Ph.D.

Director of Clinical Training, Department of Psychology, Florida International University

ROOM 115



Promoting Homework Success: Strategies for Parents, Teachers, and Students

Thomas J. Power, Ph.D., ABPP

Chief Psychologist, Department of Child and Adolescent Psychiatry and Behavioral Sciences, Children's Hospital of Philadelphia

ROOM 122



Using What We Know from Evidence-Based Approaches to Assist Children and Adolescents in Coping with Marginalization, Discrimination, and Oppression

Sannisha K. Dale, Ph.D.

Assistant Professor, Department of Psychology, University of Miami

5 P.M.

Poster presentations (first-floor hallway)

6 P.M.

End of day

POSTER PRESENTERS

DAY 1

The Relation of Maternal Anxiety and Depression Symptoms to Child-Report of Maternal Accommodation

Shannon L. Harper, Megan Hamil, Lauren Pascarella, Jordan Smith, Babetta Mathai, Allison Morton, & Catherine C. Epkins

Effects of Emotional Disturbance on Children Involved in the Foster Care System

Samantha Clark, Kourtney L. Schroeder, & Kelly Gibson

Investigation on Eating Behaviors and Nutritional Intake of Children with Autism Spectrum Disorder Compared to Typically Developing Children

Soojin Kim & Daesung Seo

Response Inhibition and Emotion Regulation Among Children with Attention-Deficit/Hyperactivity

Rachel B. Tenenbaum, Erica D. Musser, Stephanie Morris, Anthony R. Ward, Joseph S. Raiker, Erika K. Coles, & William E. Pelham, Jr.

The Yonsei Mindreading Face Battery (Y-CAM): Detecting Subtle Emotion Recognition in Adolescents with Autism Spectrum Disorder

Eun Sun Chung & Kyong-Mee Chung

Community Needs Assessment of Current Transition Planning Program and services Offered to Youth with Autism Spectrum Disorder

Carly Rubenfeld

Evaluating the Creative Achievement Questionnaire in an Emerging Adulthood Population

Emma G. Choplin, Logan T. Smith, & Eric A. Youngstrom

The Efficacy of a DBT-A Program in a Population of Predominantly Hispanic Youth

Michelle Hendrickson, Claudia Ranaldo, & Melisa Oliva

Early intensive behavioral intervention for autism: Effects on problem behaviors and parents' psychological adjustment

Sae Yeon Seong & Yung Jae Suh

Therapeutic alliance across videoconferencing-based and face-to-face treatment formats for early child obsessive-compulsive disorder

Natalie Hong, Bridget Poznanski, Jami M. Furr, & Jonathan S. Comer

DAY 2

Parental and Adolescent-Reports on the Six-Item ADHD Self-Report Scale (ASRS-6) in Relation to Conflict, Depression, and Anxiety

Lauren M. Keeley, Noor Qasmieh, Bridget A. Makol, & Andres De Los Reyes

Self-Reported Emotion Regulation in Children: Outcomes in the Resilience Builder Program®

Kristyn N. Donohue, Mary K. Alvord, & Brendan A. Rich

Maternal Emotional Role-Confusion, Depressive Symptoms, and Emotion Socialization Strategies: Links with Preadolescent Empathy

Nichollette C. Lewis, Joanna G. Hurley, Kathryn M. Graham, & Laura E. Brumariu

Maternal fears or the interference of these fears: Which is a better predictor of child anxiety?

Maddison N. Lynn & Maureen A. Sullivan

Integrating Adolescent, Parent, and Peer Confederate Reports of Adolescent Social Anxiety: Links to Observed Anxiety and Referral Status

Bridget A. Makol, Lara E. Glenn, Eric A. Youngstrom, & Andres De Los Reyes



DAY 3

Pediatric Sleep Problems and Behavior Problems in Young Children with Predominantly Mild Traumatic Brain Injury

Maria Wilson, Juliana Acosta, Dainelys Garcia, John W. Kuluz, & Daniel M. Bagner

STP-PreK: Examining Academic School Readiness Outcomes for Children Across Program Settings

Kevin Puerta Durango, Bridget Poznanski, Mellissa Wilmot, Carina Alvarez, Katherine Zambrana, Paulo A. Graziano, & Katie C. Hart

Mechanisms of change in school-nurse delivered interventions for children with anxiety

Michela Muggeo, Golda Ginsburg, Catherine Stewart, Nicole Neidelman, & Kelly Drake

Behavioral Parent Training for Preschool ADHD: The Influence of Child, Parental, and Family Factors on Change in Parenting Practices

Chelsea Dale, Justin Parent, Rex Forehand, Edmund Sonuga-Barke, & Howard Abikoff

Longitudinal Mental Health Outcomes in an OSC Population in New Delhi, India

Namratha Alturi

The Role of Cumulative Risk on Intervention Outcomes for Infants at-risk for Behavioral Disorders

Perrine Heymann, Brynna Hellin, & Daniel M. Bagner

Mother-Child Discrepancies on Maternal Rejection in Relation to Mother and Child Anxiety and Depressive Symptoms

Lauren A. Pascarella, Jordan A. Smith, Shannon Harper, Megan Hamil, Allison Morton, Babetta, Mathai, & Catherine C. Epkins

Changes in Quality of Life of the Pediatric Cancer Survivors: A Longitudinal Study

Kyunghee Ham, Myung-ah Rhee, Seongho Bae, & Kyong-Mee Chung

Summer Reading Explorers Program: Response to Intervention for Young Children with Autism Spectrum Disorder and Developmental Delays

Annette Maldonado, Della Gregg, Katherine A. Zambrana, Katie C. Hart, & Angela Waguespack

Parent-Level Factors Related to Daily Accommodation of Child Anxiety Symptoms

Shannon L. Harper, Megan Hamil, Lauren Pascarella, Jordan Smith, Babetta Mathai, Allison Morton, & Catherine C. Epkins

The Korean-Parental Overprotection Scale-Revised (K-POS-R)

Seung Ah Lee & Kyong Mee Chung

Autonomic Nervous System Tonic Response to Methylphenidate in Children with Attention-Deficit/Hyperactivity Disorder

Stephanie Morris, Erica D. Musser, Rachel B. Tenenbaum, Anthony Ward, Joseph S. Raiker, Erika Coles, & William E. Pelham, Jr.

Comorbid Anxiety Impairs Mediating Effect of Emotion Regulation between Executive Function and Internalizing Problems in Children with Neurodevelopmental Disorders

Guangyu Zeng

Assessing Safety Behaviors Using the Subtle Avoidance Frequency Examination

Noor Qasmieh, Lauren M. Keeley, & Andres De Los Reyes

Predictors of Emotional Distress in Parents of Pediatric Cancer Survivors

Eunhye Hwang



**THANK YOU FOR
COMING**

WE'LL SEE YOU
NEXT YEAR!





**Center for
Children and Families**

FLORIDA INTERNATIONAL UNIVERSITY

11200 SW 8th St. AHC-1, Room 140
MIAMI, FL 33199

Office: **305-348-0477**

E-mail: **ccf@fiu.edu**

Website: **ccf.fiu.edu**