



SOCIETY OF CLINICAL
CHILD & ADOLESCENT
PSYCHOLOGY

ROGERS
Behavioral Health

FLORIDA
KidCare
HEALTH AND DENTAL INSURANCE



MICAMH

CONFERENCE 2020

2020 MIAMI INTERNATIONAL CHILD & ADOLESCENT MENTAL HEALTH CONFERENCE

PRESENTED BY

FIU | Center for
Children and Families
FLORIDA INTERNATIONAL UNIVERSITY

THANK YOU TO OUR SPONSORS!



The Children's Trust

🌐 thechildrenstrust.org
🐦 [@childrenstrust](https://twitter.com/childrenstrust)
f [thechildrenstrust](https://www.facebook.com/thechildrenstrust)



🌐 dadeschools.net
🐦 [@miamischools](https://twitter.com/miamischools)
f [mdcps](https://www.facebook.com/mdcps)



**SOCIETY OF CLINICAL
CHILD & ADOLESCENT
PSYCHOLOGY**

🌐 sccap53.org
🐦 [@_SCCAP](https://twitter.com/_SCCAP)
f [SCCAP53](https://www.facebook.com/SCCAP53)

ROGERS
Behavioral Health

🌐 rogersbh.org
🐦 [@Rogers_BH](https://twitter.com/Rogers_BH)
f [rogers.behavioral.health](https://www.facebook.com/rogers.behavioral.health)

Florida
KidCare
HEALTH AND DENTAL INSURANCE

🌐 floridakidcare.org
🐦 [@FLKidCare](https://twitter.com/FLKidCare)
f [FLKidCare](https://www.facebook.com/FLKidCare)



🌐 renfrewcenter.com
🐦 [@renfrewcenter](https://twitter.com/renfrewcenter)
f [RenfrewCenter](https://www.facebook.com/RenfrewCenter)

FREE Workshops!



PARENT CLUB



90-minute workshops available in English, Spanish and Haitian-Creole



Flexible days and hours available, including afternoons, evenings and weekends.



Convenient locations throughout Miami-Dade County.



Free childcare at most locations for children ages 3-12 years old and accommodations as needed.



Free snacks and raffles!



Connection to other parenting supports



Learn • Share • Connect

For more information and to register, visit:
www.TheChildrensTrust.org/ParentClub



@FIUCCF



@FIUCCF



FIU Center for Children and Families



FIU CCF



FIU | Center for Children and Families

FLORIDA INTERNATIONAL UNIVERSITY

11200 SW 8th Street, AHC-1, Room 140, Miami, FL 33199 | (305) 348-0477 | ccf.fiu.edu

The Center for Children and Families (CCF) at Florida International University is an **FIU Preeminent Program** and a **world-class clinical research center** dedicated to improving the lives of children and families struggling with mental health issues through:



Education & training

for the next generation of mental health professionals.

- Continuing education opportunities in evidence-based approaches for psychologists, mental health professionals and educators.
- Professional development training to more than 6,000 M-DCPS teachers and nearly 500 schools through the CCF's partnership with Miami-Dade County Public Schools and The Children's Trust.



Clinical services

The CCF provides state-of-the-art services to approximately 3,500 families each year through **clinical services** and **research** programs presenting with the following concerns:



Cutting-edge research

Join the CCF @ MICAMH social media contest!

Each day, the 2 people who post the most about the 2020 MICAMH Conference on social media will win a special prize!

Contest Rules:

- Follow @FIUCCF on Facebook and/or Twitter.
- Use #2020MICAMH when you post (before 4 p.m.!).
- Make sure your profile is public, so we can track your posts and contact you if you win.



We lost the child we knew.
Now we've found her again.
We will

Rise

above

If someone you love is struggling with mental health or addiction, you don't have to suffer alone. At Rogers Behavioral Health, together we can not only face your challenges, we can rise above them.

ROGERS
Behavioral Health

rogersbh.org | 305-929-0600



A MESSAGE FROM THE CHAIR

WELCOME TO THE 2020 MICAMH CONFERENCE!

Thank you for attending the **2020 Miami International Child & Adolescent Mental Health (MICAMH) Conference**—it is an honor for us to have you here at our annual three-day event! We are delighted that you have chosen to attend one of the world's leading interdisciplinary conferences presenting state-of-the-art, evidence-based prevention methods and treatments for mental health and educational problems in children and adolescents.

We have an exciting agenda planned for you. Over the next few days, you will learn about the latest in child and adolescent mental health research and participate in hands-on training opportunities, as developed by pioneers of the child and adolescent mental health field. Having trained thousands of mental health professionals, educators and students, we continue to devote ourselves to sharing knowledge of effective treatments and prevention so children and their families can live a healthy and happy life.

Thank you again for coming; you are all helping make a difference for the children and families in our communities that desperately need us!

Sincerely,



Jonathan S. Comer, Ph.D.
MICAMH Conference Chair

CONTINUING EDUCATION

YOU CAN EARN UP TO 18 CE CREDITS
(MUST ATTEND ALL 3 CONFERENCE DAYS)

A total of 18 continuing education credit/contact hours can be earned!

Continuing education can be earned by those in the following professions: psychologists, licensed mental health counselors, licensed clinical social workers, licensed marriage and family therapists, and school psychologists.

Psychologists

The CCF has been approved by the American Psychological Association to offer continuing education for psychologists. The CCF maintains responsibility for the program.

Mental Health Counselors

The FIU Counselor Education Program is an NBCC-Approved Continuing Education Provider (ACEP™) and a co-sponsor of the Center for Children and Families' presentations. The FIU Counselor Education program may award NBCC-approved clock hours for events that meet NBCC requirements. The ACEP™ solely is responsible for all aspects of the program. Provider #4565, effective 9/1/11.

Nurses

The American Nurses Credentialing Center (ANCC) accepts continuing education credit provided by APA providers towards ANCC re-certification.

School Psychologists

The Center for Children and Families is approved by the National Association of School Psychologists to offer professional development for school psychologists. The Center for Children and Families maintains responsibility for the program.

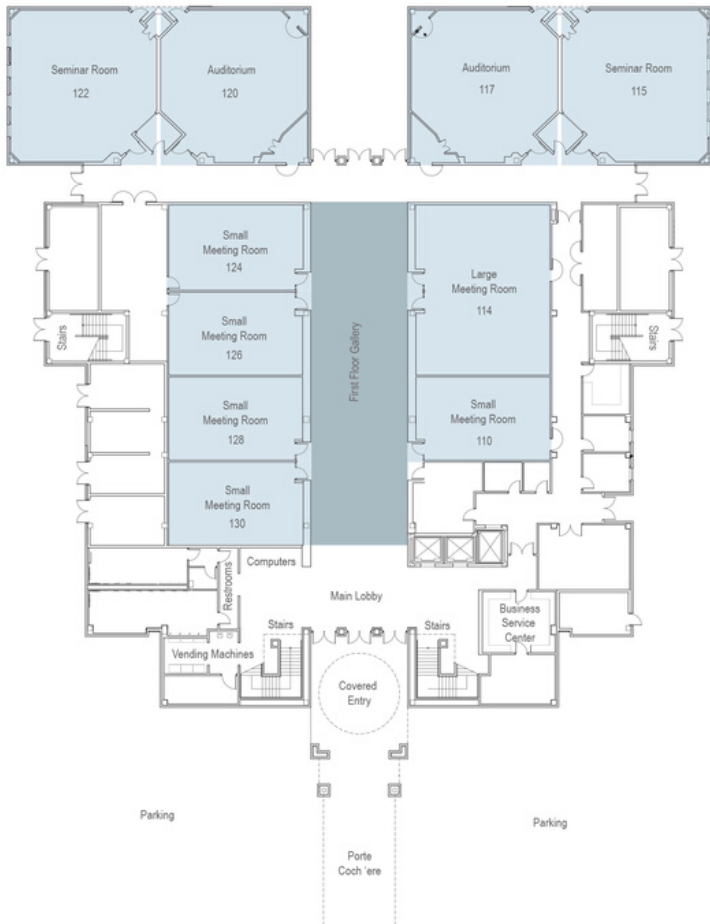
Social Workers

This program is approved by the National Association of Social Workers. (Approval #886608594)

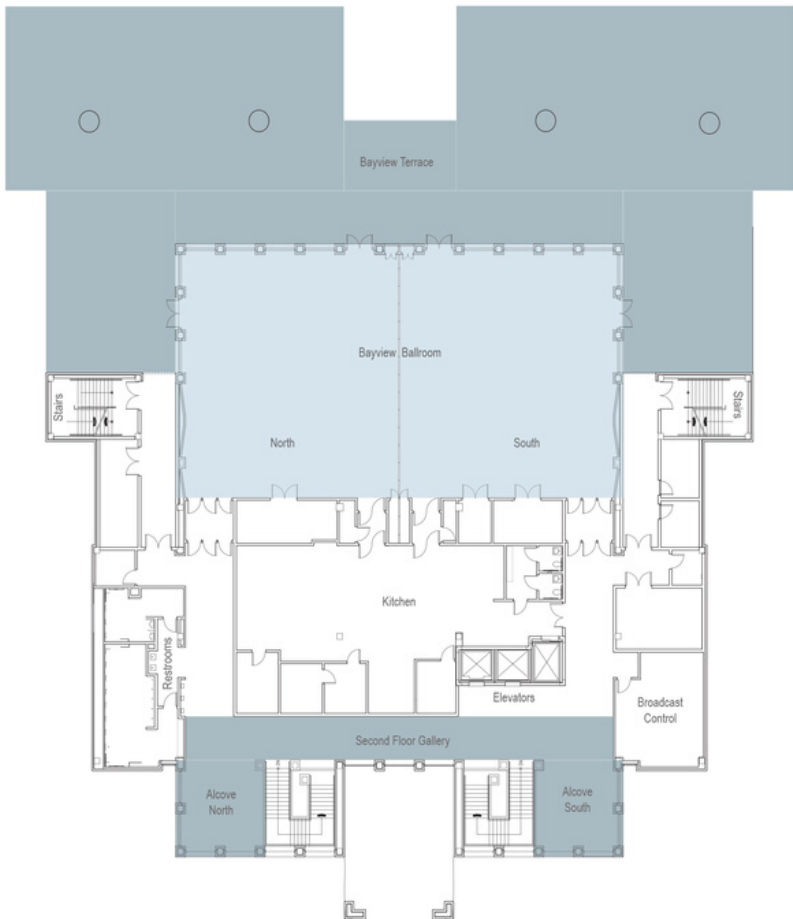
Florida Providers

The conference has also been approved by the Florida Board of Clinical Social Work, Marriage and Family Therapy and Mental Health Counseling; Florida Board of Psychology and Florida Office of School Psychology. Provider #BAP 50-12872.

1ST FLOOR



2ND FLOOR





SCHEDULE



WEDNESDAY

FEB. 5

8 AM *Registration & breakfast*

8:30 AM *Conference welcome*

KEYNOTE PRESENTATIONS

BAYVIEW BALLROOM

9 AM



Promoting Resilience in the Context of Global Adversity: Refugee and Immigrant Youth, Families, and Communities

Maryam Kia-Keating, Ph.D.

Associate Professor, Department of Counseling, Clinical, and School Psychology,
University of California, Santa Barbara

10 AM

Coffee break

10:15 AM



After Trauma: Understanding the Needs of Children

Robin Gurwitch, Ph.D.

Clinical Psychologist and Professor, Duke University

11:30 AM



Improving Services for Kids and Families Through Implementation Science: Working on the Irrigation System

Michael Southam-Gerow, Ph.D.

Professor and Chair, Department of Psychology, Virginia Commonwealth University

12:30 PM

Lunch - Bayview Ballroom/Terrace

1:15 PM

Poster session #1 - 1st Floor Hall



2 P.M. WORKSHOPS

(YOU MAY ONLY ATTEND ONE)

ROOM 115



Addressing Psychological Well-being Among Refugee and Immigrant Youth and Families

Maryam Kia-Keating, Ph.D.

Associate Professor, Department of Counseling, Clinical, and School Psychology,
University of California, Santa Barbara

ROOM 117



Child-Adult Relationship Enhancement (CARE): Strengthening Relationships with Children/Teens Who Have Experienced Trauma

Robin Gurwitsch, Ph.D.

Clinical Psychologist and Professor, Duke University

BAYVIEW
BALLROOM



Clinical Strategies for Developing Socioemotional Competence in Youth

Michael Southam-Gerow, Ph.D.

Professor and Chair, Department of Psychology, Virginia Commonwealth University

ROOM 120



Tech Parenting: How to Support Parents in Managing Children's Screen Time

Justin Parent, Ph.D.

Assistant Professor, Florida International University

ROOM 122



Conducting Semi-Structured Assessment of Suicide Risk in Youth in Clinical Settings: Balancing Standardization with Clinical Utility.

Ashley M. Shaw, Ph.D.

Clinic Director, Licensed Clinical Psychologist, & Postdoctoral Associate, Mental Health
Interventions and Technology (MINT) Anxiety Program

3 PM

Coffee break

5 PM

End of day

WEDNESDAY

POSTER PRESENTATIONS

Clinicians' attitudes towards the use of Mental Health Smartphone Applications in the Treatment of Adolescents with Anxiety and Related Disorders

Authors and Affiliations: Lessing, R., The Chapin School, New York State Psychiatric Institute/Columbia University Irving Medical Center; Fox, S., New York State Psychiatric Institute/Columbia University Irving Medical Center; & Albano, A. M., New York State Psychiatric Institute/Columbia University Irving Medical Center

Making A Match: Exploring the association between ethnic match and program utilization in a home visiting program

Author: Gutierrez, A. S.
Affiliation: Florida International University

Associations between Parental/Family Functioning and Social Functioning in Youth with ADHD

Authors: Wefelmeyer, E. M., McVey, A. J., & Gerdes A. C.
Affiliation: Marquette University

Preliminary Effectiveness of a Predominantly Internet-Based Intervention for Aggressive Youth

Authors: Heilman, M., Bui, C., Lochman, J., & White, B. A.
Affiliation: The University of Alabama

Perceived parent needs in navigating school-based therapeutic services for children with disabilities

Authors: Murphy, A. & Risser, H. J.
Affiliation: Northwestern University

How Do Specific Parenting Dimensions Relate to Internalizing and Externalizing Symptoms In Young Children?

Authors: Dede, B. & White, B. A.
Affiliation: The University of Alabama

Effectiveness of Resilience Builder Program on externalizing and internalizing problems in a low-SES school sample

Authors: Donohue, K. N., Alvord, M. K., & Rich, B. A.
Affiliation: Catholic University of America



Data-driven predictions: Identifying adolescents at risk for high internalizing symptoms by late adolescence using machine learning

Authors: Hudson, K., Owens, M., Spechler, P. A., Chaarani, B., Allgaier, N., Orr, C., Albaugh, M., Potter, A., Althoff, R., Garavan, H., & the IMAGEN Consortium

Affiliation: The University of Vermont

A summative program evaluation of a Syrian refugee resettlement program

Authors: DiGasso, A. & Bloom, J.

Affiliation: William James College

Does maternal reappraisal moderate the association between maternal trauma exposure and child emotion regulation?

Authors: Tolliver-Lynn, M. N., Kaylor, M. L., Patel, D., & Sullivan, M. A.

Affiliation: Oklahoma State University

Let's Talk: A study of the impact of gendered racial socialization on African American adolescent girls' mental health

Authors: Winchester, L.B., Allen, K., Jones, S. C. T., & Hope, E.

Affiliation: Virginia Commonwealth University

Parent and child quality of life and parental flexibility in families affected by pediatric food allergies

Authors: Fishbein, D., Garro, A.

Affiliation: Kean University

Specific modules and specific outcomes: An interrupted time series analysis examining internalizing symptoms and MATCH modules

Authors: Frederick, J., Ng, M. Y., Valente M.

Affiliation: Florida International University

"Roots before Branches": Experiences of Transgender and Gender Diverse persons in Child Welfare, A Pilot Qualitative Study

Author: Marquez, N.

Affiliation: Barry University



THURSDAY

FEB. 6

8 AM *Registration & breakfast*

8:30 AM *Conference welcome*

KEYNOTE PRESENTATIONS

BAYVIEW BALLROOM

9 AM



Promoting School Readiness in Young Children: Best Practices Across Home, School, and Community Contexts

Katie C. Hart, Ph.D.

Assistant Professor, Florida International University

10 AM

Coffee break

10:15 AM



New Directions in Understanding and Supporting Social Competence on the Autism Spectrum

Matthew D. Lerner, Ph.D.

Associate Professor, Clinical Psychology, Stony Brook University

11:30 AM



Should We Give Psychoactive Medication to America's Children or Teach Their Parents and Teachers Better Child Management Skills: A Decade of Research on Comparing, Combining, and Sequencing Interventions for Childhood ADHD

William E. Pelham, Jr., Ph.D.

Director of the Center for Children and Families; Distinguished University Professor, Florida International University

12:30 PM

Lunch - Bayview Ballroom/Terrace

1:15 PM

Poster session #2 - 1st Floor Hall



2 P.M. WORKSHOPS

(YOU MAY ONLY ATTEND ONE)

ROOM 115



What Everyone Needs to Know about E-Cigarette Use and Vaping Among Teens

Matthew T. Sutherland, Ph.D.

Associate Professor, Florida International University



Elisa M. Trucco, Ph.D.

Assistant Professor, Florida International University

ROOM 122



An Introduction to Sociodramatic Affective-Relational Intervention (SDARI)

Matthew D. Lerner, Ph.D.

Associate Professor, Clinical Psychology, Stony Brook University

ROOM 117



Advances in Selective Mutism: The Language Environment and Intensive Approaches to Assessment and Treatment

Jami Furr, Ph.D.

Assistant Professor, Florida International University

BAYVIEW BALLROOM



Clinical Guidelines for Implementing Multimodal Treatment for ADHD: How to Sequence, Dose, and Combine Treatment Modalities in School and at Home

William E. Pelham, Jr., Ph.D.

Director of the Center for Children and Families; Distinguished University Professor, Florida International University

3 PM

Coffee break

5 PM

End of day

THURSDAY

POSTER PRESENTATIONS

Early childhood adversity and alienation: The role of self-compassion and attachment security as mediating factors

Authors and Affiliations: Munguldar, K., The New School for Social Research; Kahya, Y., Social Sciences University of Ankara; Steele, M., The New School for Social Research; & Steele, H., The New School for Social Research

Autism Problem Behavior Severity and Parental Depression: The Effects of Daily Hassles and Benefit Finding

Authors and Affiliations: Vitale, S., Mercer University; Marker, C., Mercer University; Schneider, H. L., Harvard Medical School; & Alessandri, M., University of Miami

Examining the validity of the NIH Toolbox list sorting

Authors: Jusko, M., Horta, L., Campey, M., Smith, J., Little, K., Fosco, W., & Raiker, J.
Affiliation: Florida International University

Mothers' reflective functioning and the perceived need and utilization of children mental health services

Authors: Dau, A. L. B., Carlone, C., & Milan, S.
Affiliation: University of Connecticut

Elucidating the etiology of posttraumatic stress disorders in children: The role of *TPH2* genetics

Authors and Affiliations: Danzi, B. A., University of South Dakota & La Greca, A. M., University of Miami

Unifying treatment for mild anxiety and depression in pre-adolescence

Authors: Mariotti, E. C. & Bolden, J.
Affiliation: University of Tennessee-Knoxville

The impact of Internet on adolescents' depression and anxiety levels

Authors: Rivera, R., Marullo, A., Carballea, D., & Tourgeman, I.
Affiliation: Albizu University-Miami

Gender differences in pre-adolescent binge eating disorder

Authors and Affiliations: Miller, M., University of Miami & McLaughlin, N., Brown University



Collaborating with middle school administrators to intervene after a school shooting: A preliminary investigation of a classroom-wide intervention

Authors: Trammell, B., Elaine-Truette, M., Miller, K., & Hibbard, D.

Affiliations: Indiana University East

Anxiety mediates the association between neural emotional responsivity and problem alcohol use in adolescence

Authors: Villar, M. G., Florida International University; Trucco, E. M., Florida International University and University of Michigan; Hardee, J. E., University of Michigan; Zucker, R. A., University of Michigan, & Heitzeg, M. M., University of Michigan

The Bayley Scales of Infant Development as a predictor of peer competence

Authors: Hegstetter, E. & Marker, C. D.

Affiliation: Mercer University

Fear Facers! Using a summer camp to treat children with anxiety spectrum disorders and obsessive-compulsive disorder

Authors: McCarty, R., Downing, S., Nelson, R., Ordway, A., Cooke, D., Lazaroe, L., Mathews, C., & McNamara, J.

Affiliation: University of Florida

Examining the role of executive functioning processes in predicting treatment outcome in preschoolers with attention-deficit/hyperactivity disorder

Authors: Hernandez, M., Hare, M., Dick, A., Graziano, P.

Affiliation: Florida International University

The synergistic effect of low self-control and internalizing symptoms on adolescent electronic cigarette use intentions

Authors and Affiliations: Sutherland, B. D., Florida International University; Sutherland, M. T., Florida International University; & Trucco, E. M., Florida International University and University of Michigan

Internalizing pathways to adolescent substance use from adverse childhood experiences

Authors and Affiliations: Villar, M. G., Florida International University; Trucco, E. M., Florida International University and University of Michigan; Fava, N. M., Florida International University; & Zucker, R. A., University of Michigan

Outcome expectancies mediate the impact of hopelessness and impulsivity on E-cigarette use intentions

Authors and Affiliations: Madan, B., Florida International University; Sutherland, M. T., Florida International University; & Trucco, E. M., Florida International University and University of Michigan



FRIDAY

FEB. 7

8 AM *Registration & breakfast*

8:30 AM *Conference welcome*

KEYNOTE PRESENTATIONS

BAYVIEW BALLROOM

9 AM

**Reactivity to Community Violence Exposure:
Rethinking Desensitization in Youth of Color in Urban
Communities**



Noni K. Gaylord-Harden, Ph.D.

Professor of Psychology, Loyola University Chicago

10 AM

**Coffee break & SCCAP Best Student Poster Award
Announcement**

10:15 AM

**A Storm of Innovations: Bringing the Best of the
Free Mental Health Tools to the People Who
Would Benefit**



Eric Youngstrom, Ph.D.

Professor of Psychology and Psychiatry & Acting Director, Center of Excellence for Research and Treatment of Bipolar Disorder, The University of North Carolina at Chapel Hill

11:30 AM

**Making the Grade: School-based Interventions for
Pediatric Anxiety Disorders**



Golda Ginsburg, Ph.D.

Professor, Department of Psychiatry, University of Connecticut (UConn Health)

12:30 PM

Lunch - Bayview Ballroom/Terrace

1:15 PM

Poster session #3 - 1st Floor Hall



2 P.M. WORKSHOPS

(YOU MAY ONLY ATTEND ONE)

ROOM 115



The Need for Contextually-Relevant and Culturally-Specific Trauma-Informed Interventions for Youth Exposed to Community Violence

Noni K. Gaylord-Harden, Ph.D.

Professor of Psychology, Loyola University Chicago

ROOM 122



Finding, Using, Sharing, and Improving the Best Free Mental Resources

Eric Youngstrom, Ph.D.

Professor of Psychology and Psychiatry & Acting Director, Center of Excellence for Research and Treatment of Bipolar Disorder, The University of North Carolina at Chapel Hill

BAYVIEW BALLROOM



Modular CBT for Pediatric Anxiety Disorders: Calling All School Personnel

Golda Ginsburg, Ph.D.

Professor, Department of Psychiatry, University of Connecticut (UConn Health)

ROOM 117



Supporting Social, Emotional, and Behavioral Competencies in the Elementary School Setting

Erika Coles, Ph.D.

Clinical Director, Center for Children and Families; Director of Clinical Training, Clinical Science Program in Child and Adolescent Psychology, Florida International University

3 PM

Coffee break

5 PM

End of conference

FRIDAY

POSTER PRESENTATIONS

A needs assessment of low-income students attending an alternative high school: Qualitative findings

Authors: Vogel, K., White, M., Watts, V., Banayan, T., & Boustani, M.

Affiliation: Loma Linda University

Availability of psychologists for the birth to five population

Authors: Giordano, K., LaTourette, R., O'Rourke, S., Baker, S., & Breen E.

Affiliation: Kean University

Social stress and reasons for living within a clinical sample of low-income, ethnic minority adolescents

Authors: Burton, S. A., Granski, M., Gentry, M., Dackis, M. N., & Pimentel, S. S.

Affiliation: Montefiore Medical Center

School psychology doctoral programs' training of students to work with transgender and gender nonconforming (TGNC) youth

Authors and Affiliations: Miller, D., Indiana University East; Kelly, M., Ball State University; & Walters, M., Indiana University East

Identified needs and barriers for successful transition to independence for young adults aged out of foster care

Authors: Corcoran, E., Sink, L., Zaidi, F., & Gabrielli, J.

Affiliation: University of Florida

The impact of hurricane-related experiences on the stress levels and mental health functioning of parents of children of autism-spectrum disorder

Authors & Affiliations: Brodar, K. E., University of Miami; La Greca, A. M., University of Miami; Tarlow, N. T., University of Miami; & Comer, J. S., Florida International University

Families' experiences of in-home Parent-Child Interaction Therapy: An exploratory study

Authors and Affiliations: Decker, K. B., Montana State University; Slominski, T., Whole Hearts Counseling; & Fregoso, A., Whole Hearts Counseling



A comprehensive overview of pediatric medical traumatic stress

Authors: Miller, A., Warfield, J. R., & Williams, J. L.

Affiliation: Wright State University

Practicing psychologists' evidence-informed knowledge of attention-deficit/hyperactivity disorder (ADHD)

Authors: Vasilevskis, G., Meneses, A., Creek, B., Perle, & J. G.

Affiliation: Midwestern University

Health-promoting behaviors and subjective wellbeing among high school aged adolescents

Authors and Affiliations: Smith, N. D., University of South Florida and University of Miami; Bradley-Klug, K., University of South Florida; Suldo, S. M., University of South Florida; Brennan, E., University of South Florida; Dedrick, R., University of South Florida; & Shaffer-Hudkins, E., University of South Florida

An application of the dual factor model of mental health in elementary school students: Implications for social functioning and student engagement

Authors and Affiliations: Smith, N. D., University of South Florida and University of Miami; Suldo, S. M., University of South Florida; Hearon, B. V., University of South Florida; & Ferron, J. M., University of South Florida

Influence of the Level of Asian Culture Exposure on the Association of Trait Emotions and Suicidal Ideation

Authors: Choplin, E. G., Howie, S. R., & Youngstrom, E. A.

Affiliation: University of North Carolina at Chapel Hill

Confirming disordered eating behavior trends correlated with Asian identity among college students

Authors: Kim, H., Thaker, I., & Youngstrom, E. A.

Affiliation: University of North Carolina at Chapel Hill

Evaluating the association between discrete emotions and manic and depressive symptoms

Authors and Affiliations: Smith, J. L., University of North Carolina at Chapel Hill; Smith, L. T., University of North Carolina at Chapel Hill and Duke University; & Youngstrom, E. A., University of North Carolina at Chapel Hill

Using Wikipedia, Wikiversity, and Twitter to Disseminate Evidence-Based Psychology: An Update on Progress

Authors: Wilson, E. D., The HGAPS Author Team, & Youngstrom, E. A.

Affiliation: University of North Carolina at Chapel Hill



Presented by the FIU Center for Children and Families, the Miami International Child & Adolescent Mental Health (MICAMH) Conference is the leading interdisciplinary conference that presents state-of-the-art, evidence-based prevention and treatment interventions for mental health and educational problems in children and adolescents.

The conference offers:

- Keynote presentations
- Hands-on breakout workshops
- Student poster sessions
- Continuing education credits

Up to 18 continuing education credits are offered for:

- Psychologists, APA
- Mental Health Counselors, NBCC
- Nurses, ANCC
- School Psychologists, NASP
- Social Workers, NASW

FIU | Center for
Children and Families
FLORIDA INTERNATIONAL UNIVERSITY

11200 SW 8th Street, AHC-1, Room 140
Miami, Florida

305-348-0477 | ccf@fiu.edu | ccf.fiu.edu